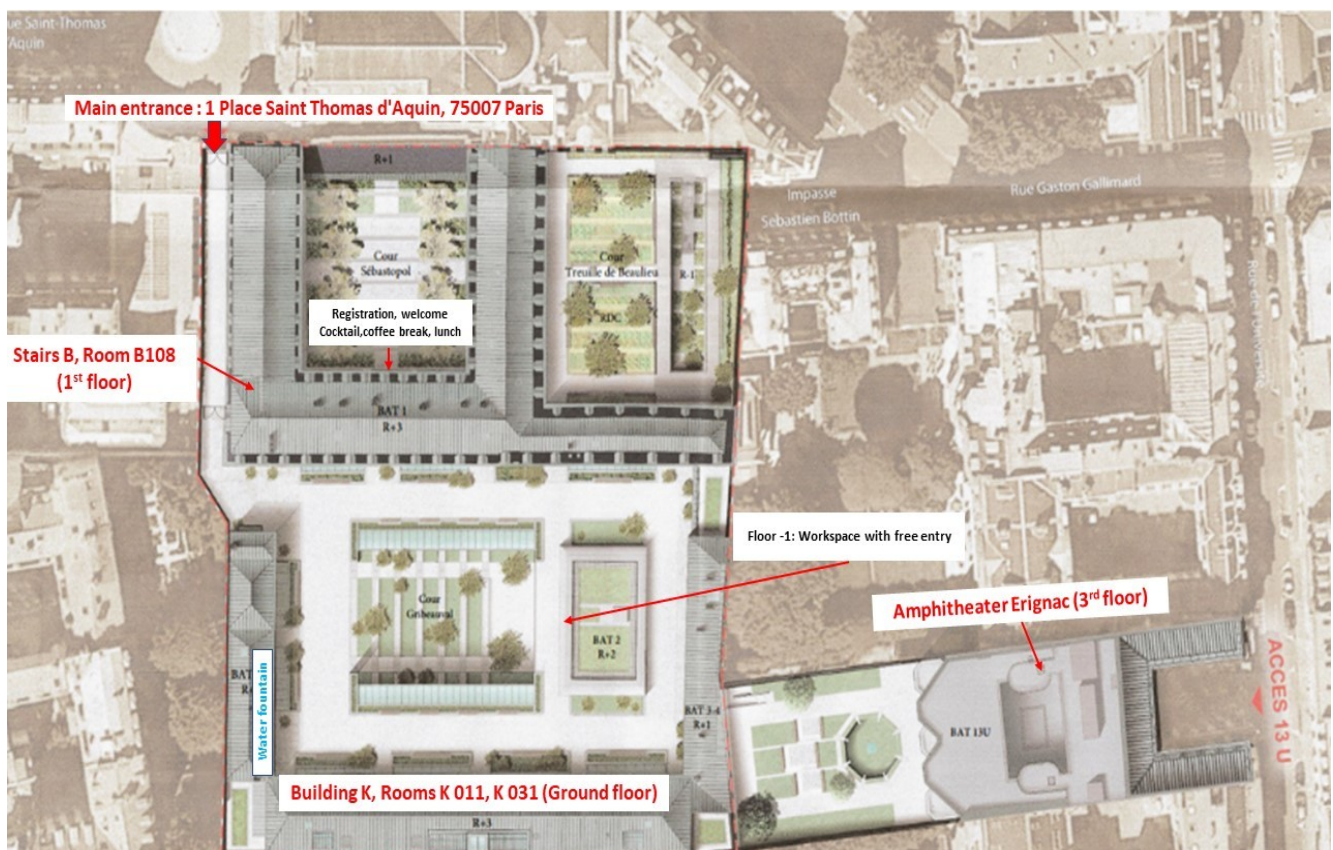


RC28 Paris 2023 – May 23-26, 2023

Education and Social Inequality across the Life Course



**Conference Venue:** Sciences Po, Paris 1, place Saint Thomas d'Aquin, 75007 Paris



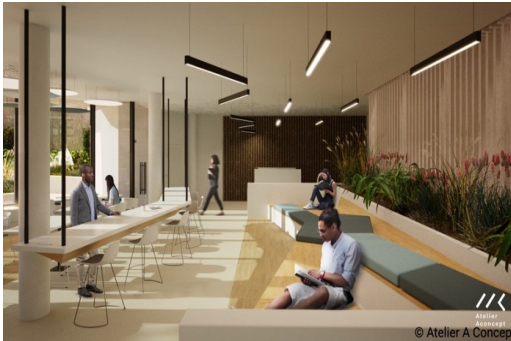
### **Audio Visual Equipment**

The conference room is equipped with computer facilities, through which all powerpoint presentations will be shown. Speakers are kindly asked to prepare their presentation in powerpoint format.

## Room B 108



## Hall & Amphitheater Jean Moulin



### Meals

Lunch will be provided on 24 & 25 May in the “Cour Sébastopol”

Coffee Break during the event will be provided in the “Cour Sébastopol”

Dinner will be provided (only for registered people) on 25 May at 20.00

**Local Contact** Should you need to contact someone during the meeting in Paris, please contact: **Linda Amrani**, [linda.amrani@sciencespo.fr](mailto:linda.amrani@sciencespo.fr) - 33 1 45 49 83 67

**Sciences Po security services:** 33 1 45 49 55 55

### Travel to the city/event

#### Closest airport to city/event venue

**Arriving from Roissy Airport:** <http://aeroportsdeparis.fr>

- **RER B** (about 45-minute ride)  
From terminal 1: take the free automated train **CDGVAL** located on level 2 to reach the train station (the ride takes about 5 minutes). From terminal 2: follow the 'Paris by train' signs to reach to the train station by foot. From terminal 3: take the pedestrian walkway 'Paris by train' to reach to the train station by foot (400 meters). At the RER train station: take the RER B and transfer at Châtelet - Les Halles. Take line 4, direction Porte d'Orléans, and get off at Saint-Germain-des-Prés. It is recommended that you take a direct RER train to Paris and not a local train (as the latter takes about 15 minutes longer). <https://www.ratp.fr/en>
- **BUS DIRECT (Air France)** (about 50 minutes)  
Follow the signs showing BUS DIRECT. Make sure that you get on line 4 which connects the airport to the gare

Montparnasse and gare de Lyon. From gare Montparnasse, take the metro line 4, direction Porte de Clignancourt, and get off at Saint-Germain-des-Prés. <https://www.lebusdirect.com>

- **TAXIS** (40 minutes, it depends on the traffic)  
Taxi cabs usually allow a maximum of 3 or 4 people. A surcharge applies based on your number of suitcases and as of the 4th passenger. We recommend that you ask the driver for a receipt on arrival.

**Arriving from Orly Airport:** <http://aeroportsdeparis.fr>

- **ORLYVAL & RER B** (about 35 minutes)  
Follow the 'Paris by train' signs to reach the Orlyval (automated train) which connects the terminal to the RER train station. Take the RER B and transfer at Denfert-Rochereau. Take line 4, direction Porte de Clignancourt, and get off at Saint-Germain-des-Prés. <http://www.ratp.info/informer/anglais/aeroports.php>
- **BUS DIRECT (Air France)** (about 40 minutes)  
Follow the signs showing 'cars Air France'. Make sure that you get on line 1 which take metro line 4, direction Porte de Clignancourt, and get off at Saint-Germain-des-Prés. [www.lebusdirect.com](http://www.lebusdirect.com)
- **ORLYBUS** (about 60 minutes)  
Take the Orlybus to Denfert-Rochereau then transfer to metro line 4, direction Porte de Clignancourt, and get off at Saint-Germain-des-Prés  
<http://www.parisaeroport.fr/en/passengers/access/paris-orly/public-transport/orlybus>
- **TAXIS** (30 minutes' ride)  
Taxi cabs usually allow a maximum of 3 or 4 people. A surcharge applies based on your number of suitcases and as of the 4th passenger. We recommend that you ask the driver for a receipt on arrival.

## Closest train station and metro/subway to city/event venue

Directions using public transportation: <https://www.ratp.fr/en>

### Metro stop:

- Saint-Germain-des-Prés (line 4: Porte de Clignancourt - Porte d'Orléans)
- Rue du Bac (line 12 : Porte de la Chapelle – Mairie d'Issy)

**Bus lines:** 39, 48, 63, 70, 86, 87, 94, 95, 96,68,69

### Train station:

- Gare de Lyon (line 1 : Château de Vincennes - La Défense. Rer A)
- Gare du Nord (line 4 : Porte de Clignancourt - Mairie de Montrouge. Rer B)
- Gare de l'Est (line 4 : Porte de Clignancourt - Mairie de Montrouge. Rer B)
- Gare Saint Lazare (line 12 : Mairie d'Issy – Aubervilliers Front Populaire)

### Long distance bus service

Flixbus: <https://www.flixbus.co.uk>

Ouibus: <https://www.ouibus.com>

Eurolines: <https://www.eurolines.eu>

Isilines: <https://www.isilines.com>

**Compare bus tickets & find the cheapest one:** <https://www.comparabus.com/en>

### Any important info to assist participants

Airports: <http://aeroportsdeparis.fr>

Métro/Bus in Paris: <http://www.ratp.fr>

Plans and maps of Paris: <https://en.parisinfo.com>

How to get to and around Paris: <https://en.parisinfo.com/practical-paris/how-to-get-to-and-around-paris>

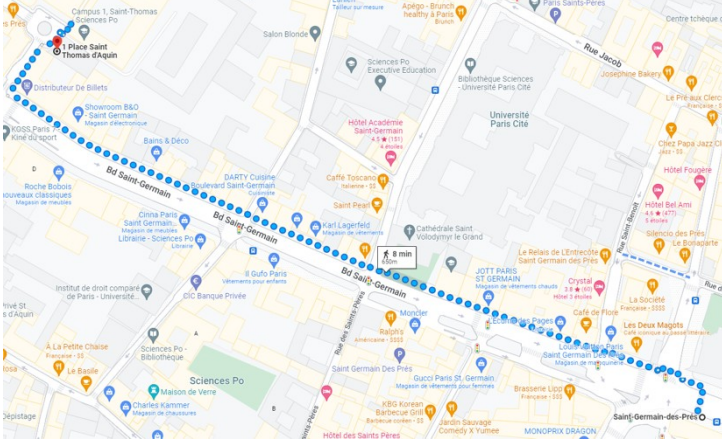
Internet, telephone and postal services in France: <https://en.parisinfo.com/practical-paris/internet-telephone-and-postal-services-in-france>

Planning your stay in Paris: <https://en.parisinfo.com/practical-paris/planning-your-stay-in-paris>

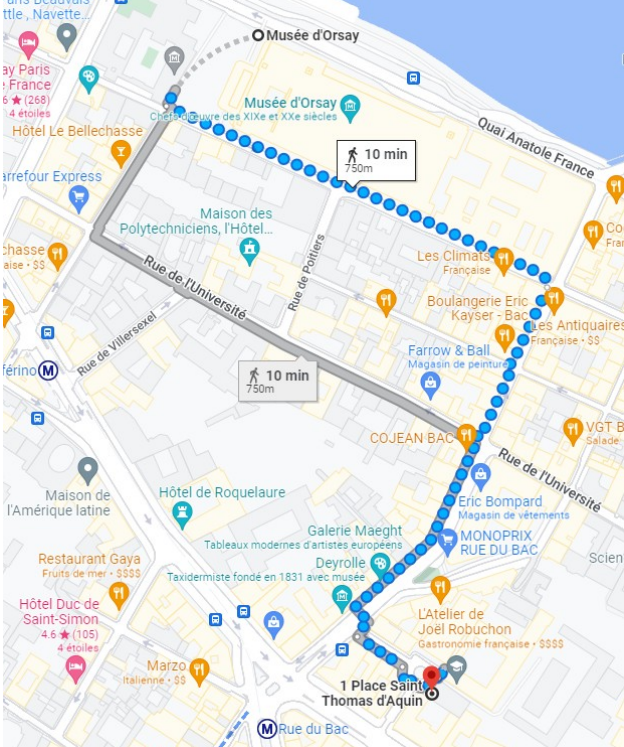
For further information about Paris: <http://en.parisinfo.com>

Health in Paris (hospitals, chemists, emergency numbers): <https://en.parisinfo.com/practical-paris/useful-info/health-in-paris>

From Métro Saint Germain des Près to Sciences Po, 1 place Saint Thomas d'Aquin 75007 Paris (7 mn by walk)



From Musée d'Orsay RER to Sciences Po, 1 Place Saint Thomas d'Aquin



From Métro Rue du Bac to Sciences Po, 1 Place Saint Thomas d'Aquin, 75007 Paris

